

Central Brass Company, Inc.
3325 S. Garfield Ave.
Commerce, CA 90040
(800) 321-8630
www.centralbrass.com

Tools:



Adjustable Wrench



Flat Head Screwdriver



Teflon Tape



Rags

Model Number: 0084-N2 Series

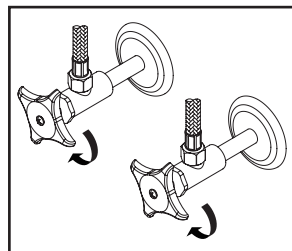
Warnings and Notes:

Check with local plumbing code requirements before installation.
This product should be installed by a local listed plumber.
Do not use plumbers putty on threads.

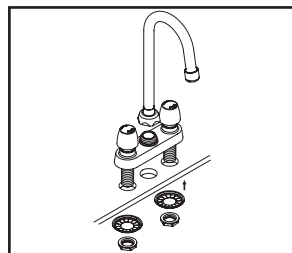


Installation Steps:

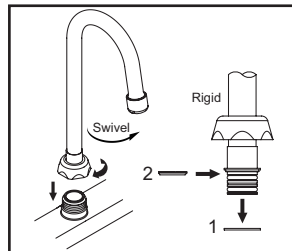
Slow-Close Two Handle Lavatory Faucet



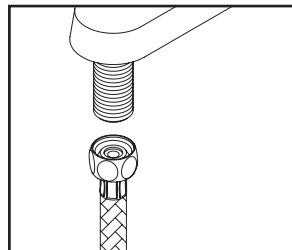
(1) Shut off the water supply. Remove old faucet. Clean mounting surface in preparation for new faucet.



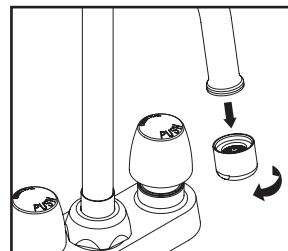
(2) Install spout to the faucet body. Make sure the spout is installed straight to avoid damaging the O-ring. Place the faucet through the mounting surface. Slide the crowfoot washer through shank from underneath of the mounting surface. Tighten the locknut with the help of 1-3/32" socket set.



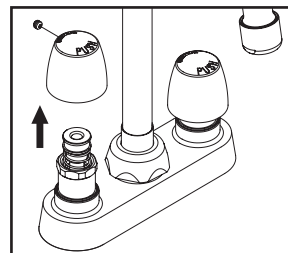
(3) For spout model number CS-22002, CS-22003, utilize friction brass washer to make spout rigid by removing Nylon gasket and replacing with friction brass washer, tighten retainer nut to the faucet body with wrench.



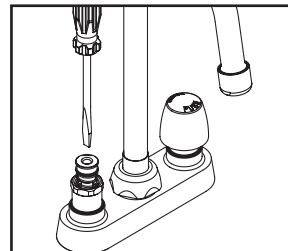
(4) When using stainless steel braided faucet supply hose; this faucet requires one end of the supply hose to have a 1/2" female IPS connection. The other end of this supply hose must match the thread on the water supply valve under your sink. Once you've identified the required size, carefully follow the manufacturer's installation instructions for each hose.



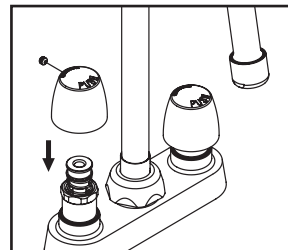
(5) Important: After installation is complete, remove aerator. Turn water supplies on and allow both hot and cold water to run at least one minute each. While water is running, check for leaks. Turn off water and replace aerator.



(6) The slow close cartridge is factory preset timing to 10 seconds@60 PSI. Depending on the inlet water pressure and water temperature this timing can vary. If timing needs to be changed, remove the handle by loosening with Allen screw.



(7) With the help of flat head screwdriver, loosen the screw to decrease the timing and tighten the screw to increase the timing. The timing can be adjusted from 0 to 60 seconds depending on the inlet pressure and water temperature.



(8) Once the satisfactory timing has been adjusted, install the handle by tightening Allen screw.